

Information Engineering Technology

# **rapide**

# **Install Guide**



Release 3.0.0



# Contents

<b>Toolset Plug-in Install</b>	<b>4</b>
Pre-Requisites .....	4
Download Files.....	4
Installing Software .....	5
Documentation .....	7
Sample Models .....	8
Build Variables .....	8
<b>Server Post Processor</b>	<b>9</b>
Pre-Requisites .....	9
Installation .....	9
Windows.....	9
z/OS .....	9
Operation.....	10
Windows.....	10
z/OS .....	10

# Toolset Plug-in Install

---

## Pre-Requisites

- CA Gen Toolset 8.0, 8.5 or 8.6
- Browser/Mobile Applications:
  - 32 or 64 bit Java JDK 1.8
  - 32 or 64 bit Java JRE 1.8
- Browser Applications:
  - Internet Explorer 9 and later
  - Google Chrome 29 and later
  - Firefox 23 and later
  - Safari 6 and later
  - Microsoft Edge 1.0 and later
  - Opera 15 and later
  - iOS 8 and later (Safari)
  - Android 4 and later (Chrome)
- Mobile Applications:
  - See platform specific guide for iOS and Android native clients
- Desktop Applications:
  - 32 bit Java JDK 1.8
  - Java JRE 1.8
- Application Server Deployment
  - JEE compliant application server

---

## Download Files

Download RAPIDExxx.exe (where xxx is the version required) from the web site into a temporary directory e.g. c:\temp\

# Installing Software

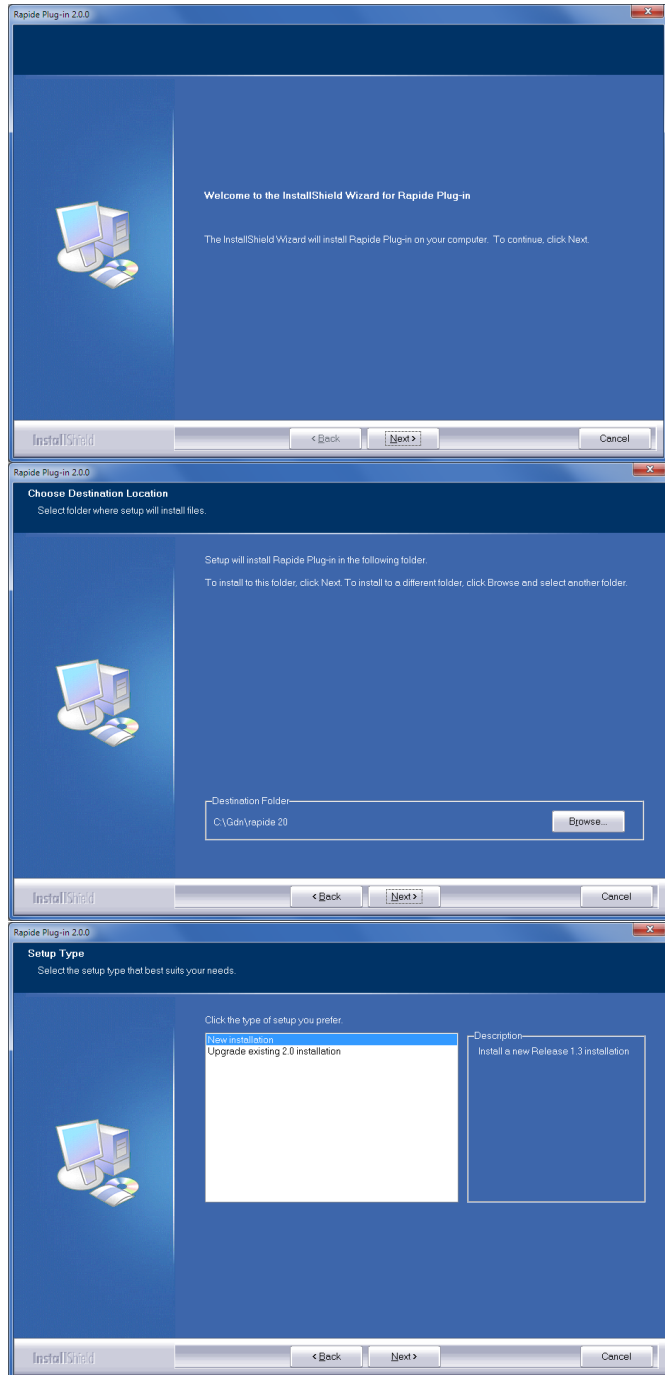
- Execute RAPIDExxx.EXE on your workstation.

The set-up program will first display a *Welcome* panel, and then the license agreement. Read the information and proceed with the installation.

The next step is to decide what location to place the software.

If Setup detects a previous installation of the Rapide plug-in, it will pre-select this.

Choose whether to install a new installation or upgrade an existing installation



Specify a folder for the Rapide Home path that will contain the OSGi server files and modifiable configuration files. You will need update access to the folder, so it is recommended that you do **not** choose a Program Files folder.

The folder cannot also be the same as the chosen software location.

Select the folder where the Java Version 8 Development Kit is located.

If you do not select a valid folder, you can proceed with the installation but will not be able to build or assemble code on this workstation.

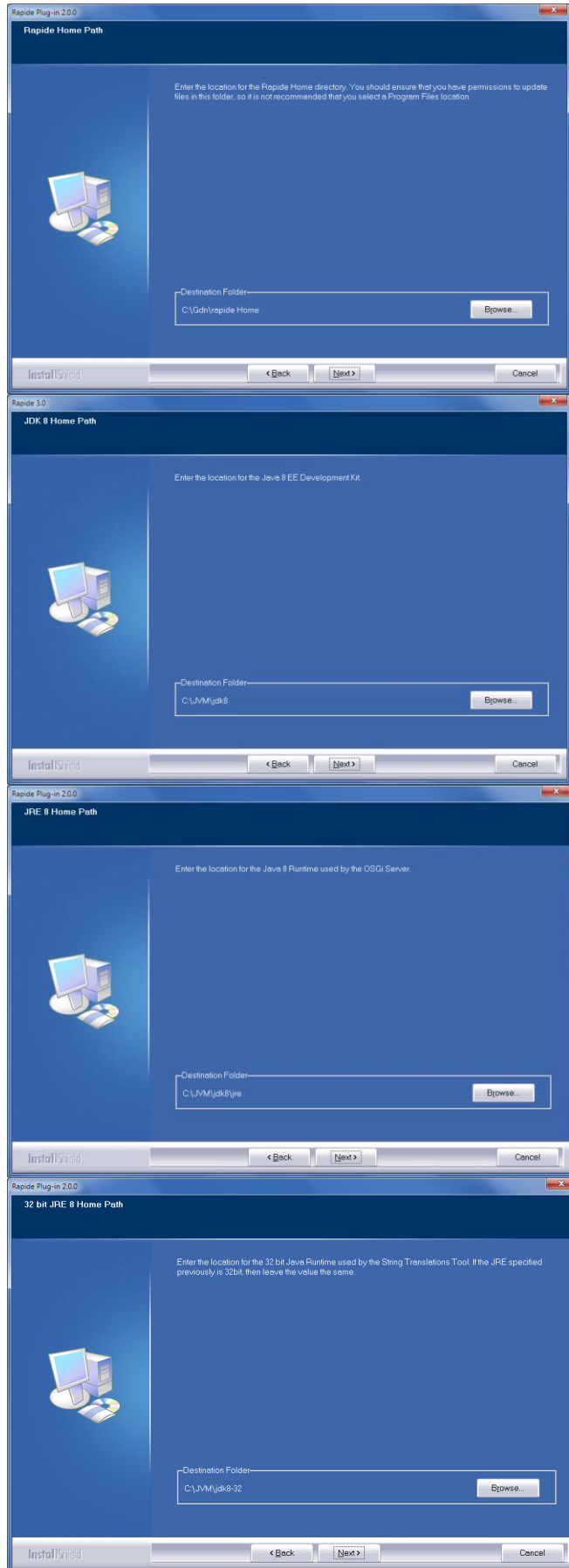
The folder specified should contain java.exe, javac.exe and javaw.exe in a \bin sub-folder.

Select the folder where the Java Version 8 Runtime Environment is located. This can be 32 or 64 bit.

The folder specified should contain java.exe, and javaw.exe in a \bin sub-folder.

Select the folder where the 32-bit Java Version 8 Runtime Environment is located. This is required for the Rapide Strings Translation Tool.

If the JRE specified above is 32 bit then it can use the same value.



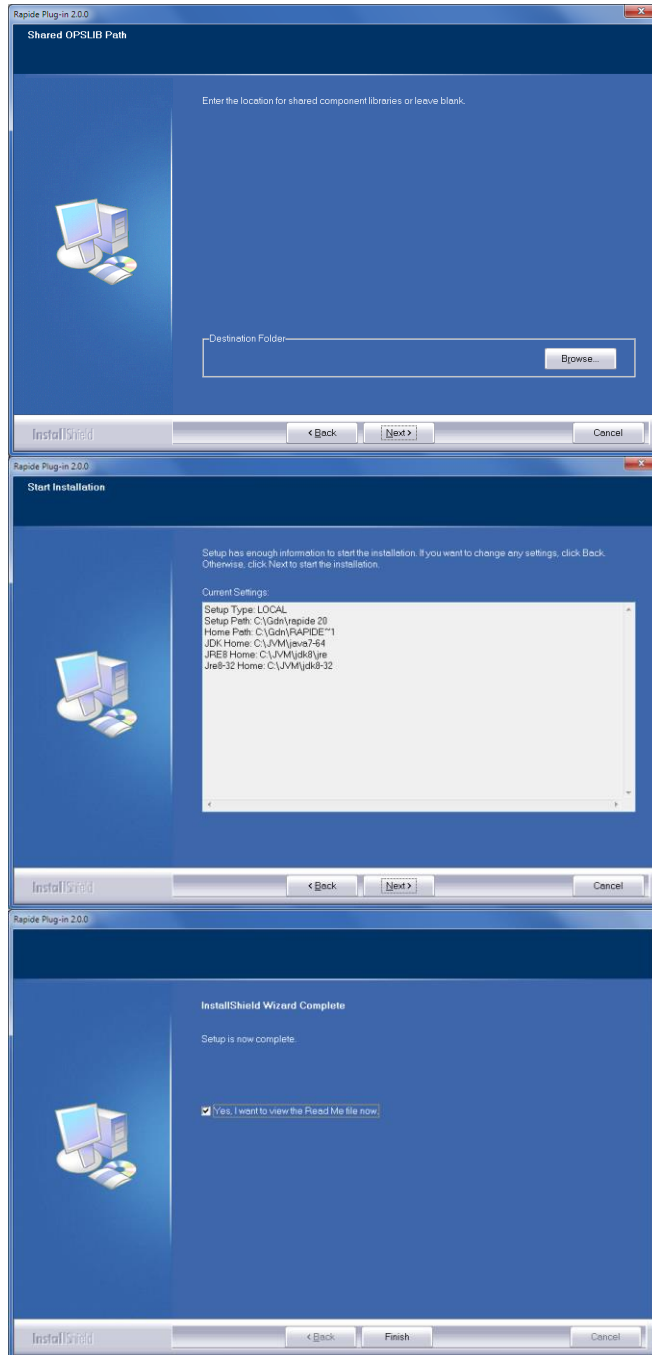
The Rapide Assemble process will use shared OPSLIBs from the path defined by the RAPIDE\_OPSLIB\_PATH environment variable, and use this OPSLIB JAR in preference to the model's java\classes path. You can either set the value for the RAPIDE\_OPSLIB\_PATH environment variable now or update it later.

Press Next to commence the installation

Once the installation is complete, press Finish.

Obtain a rapide.licence file from your system administrator or IET and place it in the Rapide software directory (not the Rapide Home path). It is also possible to configure Rapide to use a shared licence file, so consult your system administrator if your organisation uses a shared licence file.

You can now access the Rapide Designer and Generator from the Gen Toolset Plug-in menu.



---

## Documentation

Documentation for Rapide is located in the \doc folder and is also available from within the plug-in by pressing F1.

---

## Sample Models

The Rapide sample model is provided in the \models folder

- rapsamp.ief for Gen 8.5 and above

The Installation Guide for the sample model is located in the \doc folder.

---

## Build Variables

If you wish to amend the paths specified in the setup after installation, the gdclientenv.bat uses the following environment variables that define the following paths:

Variable	Description
RAPIDE_VERSION	Version of the Rapide runtime. Should be set to 3.0
RAPVER	Version of the RAP runtime. Values are: TAB – required for mobile applications 34 – the current production version.
GDSWPATH	Location of the plug-in software
RAPHOME	Location of Rapide HOME
RAPIDE_EXT_CLASSPATH	Specify additional folders or JAR files to be added to the CLASSPATH when building an EAB operations library.
RAPIDE_OPSSLIB_PATH	Location of shared OPSLIB JAR files
RAP_SHARED	Path for shared JAR files
JDK_HOME	Location of the Java Development Kit Home. Should contain bin\javac and jre\bin\java
PATH	Add in additional directories as required.
CLASSPATH	Add in additional directories as required.



# Server Post Processor

---

## Pre-Requisites

The Rapide server source code post-processor (RAPSVSPP) is used to enable MAKE and NEXTTRAN support when using the Rapide Block Mode Option. If you are not using the Block Mode Option you do not need to install it.

RAPSVSPP supports server code generated for C, Java or COBOL and is available for execution on Windows or z/OS platforms. Additional language and platform support is available on request.

---

## Installation

The RAPSVSPP software is installed with the Rapide plug-in software and is located in the \rapsvspp folder.

Choose the platform below based on where you will execute the post processor and not the target platform of the server code. For example, if you generate COBOL code using the Gen toolset, then choose Windows not z/OS.

### Windows

The post-processor can be executed directly from the \rapsvspp\Windows folder or you can copy the software to another location.

#### *Rapide Generator Integration*

If you have packaged the server code into a windows load module and are building the application using the Rapide Generator plug-in, then the Rapide Build process automatically invokes RAPSVSPP and you do not need to make any further modifications.

#### *Gen Build Tool Integration*

If you are building the application using the workstation Gen Build Tool, then execution of the post-processor can be automatically performed by amending the build tool scripts. If you are unsure about this method, contact IET for further details.

As an example, to integrate RapideSvrSPP for EJB server builds, the following lines could be added to your build\_lm\_java.scr Build Tool script:

```
{* IET modification - added call to Rapide Server Post Processor *}
{{IF}} EQUAL "{execunit.LMTYPE}" "SRVR "
echo *** Rapide Svr Post Processing on Procedure Step Java Sources ***
SET RAPSVRSPP_PATH=C:\rapide30\rapsvspp\Windows
SET PATH=%RAPSVRSPP_PATH%;%PATH%
  {{FOREACH}} PSTEP AS pstep
    {{IF}} NOT_EQUAL "{pstep.ABTYPE}" "CASCADE"
call %RAPSVRSPP_PATH%\RapideSvrSPP1.bat "{LOC.CODE_SRC}{pstep.PACKAGE}\{pstep.MEMBER}.java"
    {{ENDIF}}
  {{ENDFOR}}
{{ENDIF}}
{* End of IET modification *}
```

This is normally added early on in the processing, such as just before the "SUMMARY" section of the SCR.

### z/OS

The z/OS post processor is a z/OS load module that can be used to post process source code generated from a host encyclopaedia. Instructions for installation of the post processor on z/OS are located in the rapsvspp\zOS\readme.txt file.

---

## Operation

### Windows

To post process C, Java or COBOL source code on Windows, execute `\rapsvpp\Windows\RapideSvrSPP.bat` to process all of the source code in a directory, either providing the source code path as a parameter or leaving the parameter empty to be prompted for the source code folder.

For example, to post-process all of the source code in folder `c:\models\example.ief\c` you would execute the following command:

```
RapideSvrSPP c:\models\example.ief\c
```

To post process a single source file, execute `RapideSvrSPP1.bat` with the file for example:

```
RapideSvrSPP1.bat c:\models\example.ief\mysource.sqc
```

### z/OS

It is recommended that the RAPSVSPP program is incorporated into your compile job and is executed prior to compilation of the source code.